

Compact linear drive for mounting on lift valves.

- Low deadband
- stable aluminum housing
- flexible setting options
- Metal coupling
- Manual override
- Interchangeable with Belimo drives with UNV-002 console

**Technical specifications**

function	regulation				On to	
engine type	CA24C	CA260C	CA24C-R	CA260C-R	CA24	CA260
power connection	24VAC/DC	90-260VAC	24VAC/DC	90-260VAC	24VAC/DC	90-260VAC
setpoint range	(0)2-10V / (0)4-20mA *				3 point**	
Return message	(0)2-10V / (0)4-20mA				optional	
deadband	±0.6% of the total stroke				-	
repeatability	±0.3% of the total stroke				-	
limit switch	2				optional	
potentiometer feedback	-				optional	
max. switching capacity	24V AC/DC 200mA				250V AC/DC 1A	
setting speed	1.5 / 2 / 3 s/mm (default: 2 s/mm)				2 or 3 s/mm (Default: 3s/mm)	
security features	Monitoring of tensile force, setpoint, temperature of the electronics etc.				traction monitoring	
diagnostic functions	Storage of engine and total operating time, temperature temperature and route classes, etc.				-	
Safety position (Fail Safe)	-	-	freely adjustable		-	
burden	500 Ω with current control signal /95kΩat voltage adjustment gnal				-	
Max. Input	13 w	12 w	13 w	12 w	13 w	12 w
Power consumption heating resistor	10W					
Inrush current heating resistor (PTC)	6 A	2.5A	6 A	2.5A	6 A	2.5A
power	800N					
Degree of protection (EN 60529)	IP65					
permissible ambient temperature	- 10°C to +60°C					
duty cycle	100%					

* : When controlling with a volt input signal, a split range setting is also possible

** : Minimum duty cycle 200ms

Drive with mains failure protection (option)

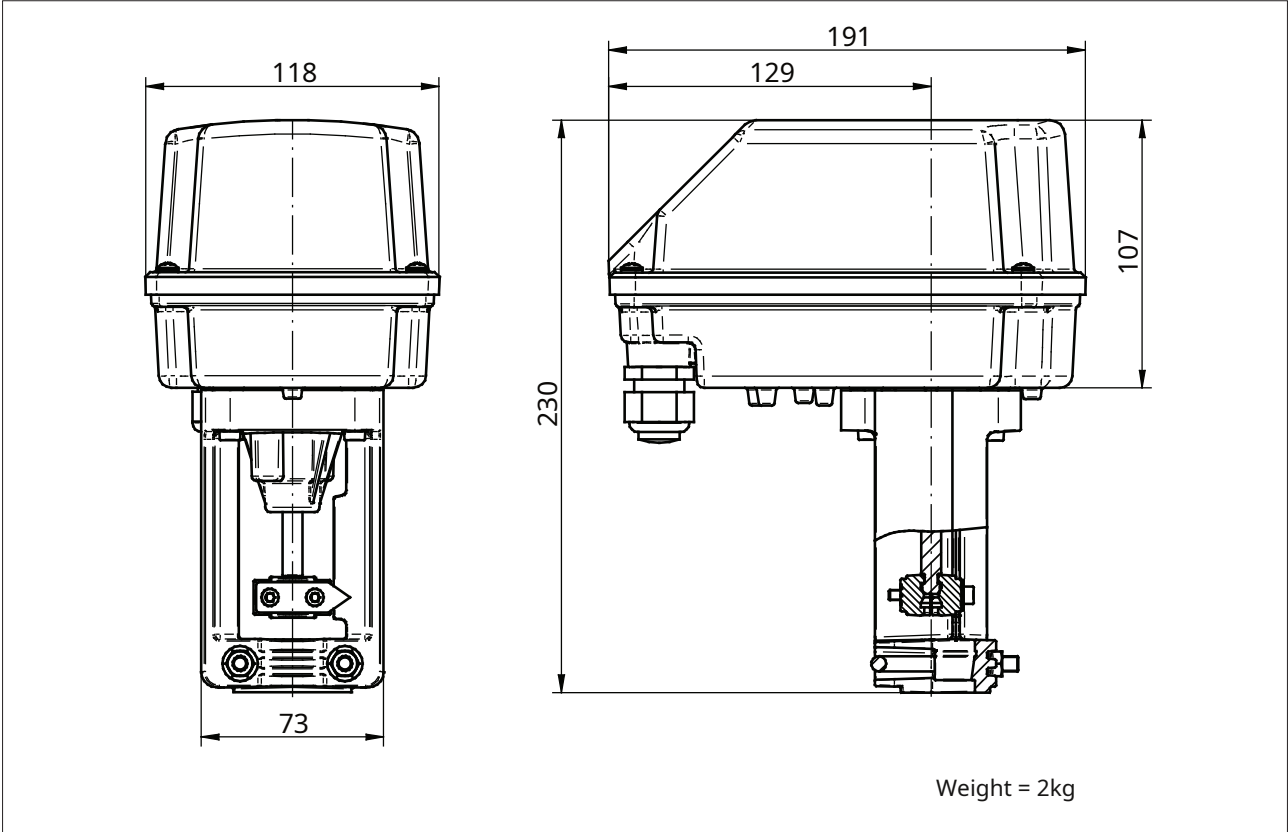
- Safety function in the event of a power failure
- Energy supply via high-performance capacitors
- Fail-open, fail-closed or selectable in any valve position.
- Independent monitoring of the state of charge of the capacitors

Order number system

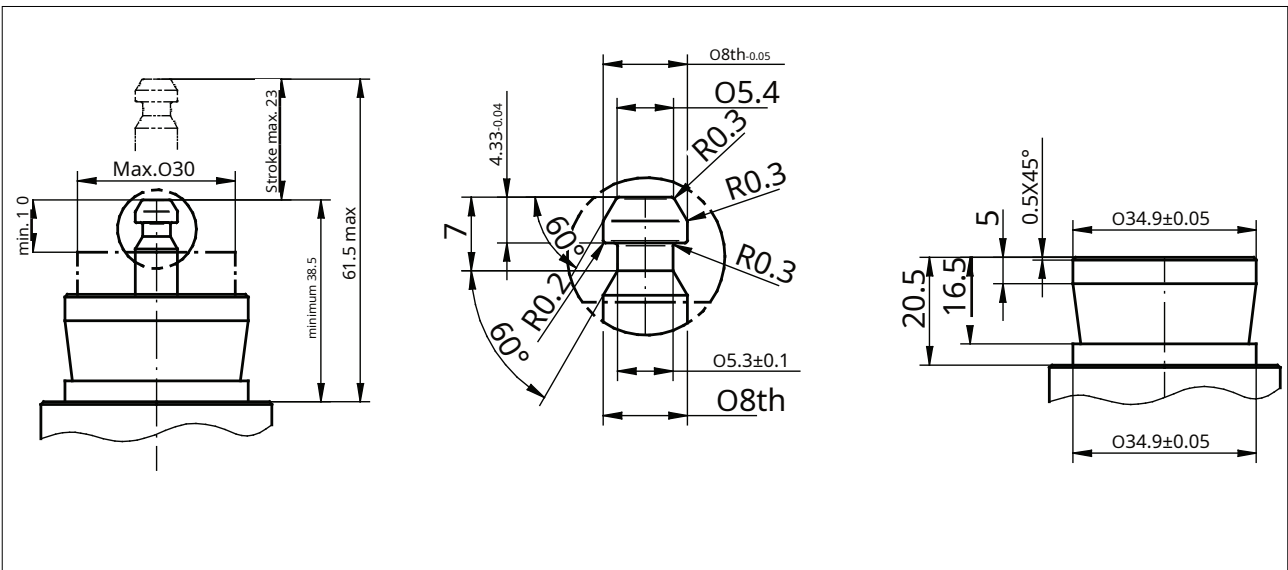
		Item number:									
		2032/									...
version											
eg 010 = version 1.0	xxx										
Article											
drive complete	A										
execution											
0.8 kN linear actuator without positioning electronics (3-point control)	A										
0.8 kN linear actuator with positioning electronics	C										
supply voltage											
90-260V, 50Hz/60Hz	0										
24VAC/DC	1										
mounting kit											
Without attachment kit	0										
incl. mounting kit (console) and standard coupling	1										
power failure backup											
without power failure protection	-										
Safety position closed in the event of a power failure (spindle moves out of the drive)	1										
Safety position open in the event of a power failure (spindle retracts into the drive)	2										
communication											
default	-										
Bluetooth add-on module	B										
control signal											
Standard, for drives with position electronics 4-20 mA (4 mA closed, 20 mA open)	-										
0-10V (0V closed, 10V open)	3										
2-10V (2V closed, 10V open)	4										
inverted function, 4-20 mA or 2-10V, 20mA(10V) closed, 4mA(2V) open	5										
Actuating signal setting split range adjustment according to customer specifications	8th										
limit switch											
without	-										
two path-dependent limit switches for drives without position electronics	2										
setting speed											
default	-										
Ideas											
default	-										
Accessories											
without	-										
heating resistor	H										

Order example: 2032/010AC0-1-B
 Compact motor drive, version 1.0, drive 0.8kN, supply voltage 90-260V 50Hz/, without mains failure protection, with additional Bluetooth module, standard control signal: 4-20 mA

dimensions and weight



Dimensions for valve connection



size in mm