

# Segment plate valve 5030

with motor drive

DN 25 to DN 300 On request up to DN 800



## Motorized valve for adjusting liquid media and steam.

- Can be used with contaminated media
- Robust design
- Backsealing
- Also adjustable against the direction of flow
- Space-saving wafer design
- Quiet operation
- High Kvs values

### Technical specifications

design	Intermediate flange design for flanges according to DIN EN 1092-1 form B	
nominal widths	DN 25 to DN 300	
nominal pressure	DN 25 to DN 150	PN 25 according to DIN 2401 also suitable for flanges PN 10 - PN 25
	DN200	PN 25 according to DIN 2401
	DN 250 to DN 300	PN 16 according to DIN 2401
media temperature	- 60°C to +220°C	
Ambient temperature *	- 30°C to +100°C	
rangeability	60:1	
curve	modified linear	
Leak rate % of Kvs	<0.001	

\* : Observe application limits of the drive

### materials

Housing	Stainless steel 1.4571
rack	Stainless steel 1.4112, treated
pressure springs	1.4310 stainless steel
sealing washer (fixed)	Stainless steel 1.4112, treated
sealing disk (movable)	Stainless steel 1.4112, treated
sliding ring	Stainless steel 1.4112, alternatively treated gunmetal
pen holder	Stainless steel 1.4571
wear ring	Stainless steel 1.4571

### drive

A large number of drive variants are available.

For the technical data of the drive, please refer to the corresponding data sheets.



# Segment plate valve with motor drive 5030



**Permissible differential pressures**  
(For temperatures up to 120°C)

**At temperatures above 120°C: consider the pressure-temperature rating**

## Type 2030 actuator (OPEN-CLOSE and control operation)

power	2kN	5kN
DN	max. differential pressure in flow direction (against flow direction) [bar]	
25	25 (16)	25 (25)
32	25 (11)	25 (25)
40	25 (8)	25 (22)
50	17 (5)	25 (16)
65	12 (4)	25 (11)
80	7 (3)	25 (9)
100	3 (2)	21 (6)

## PSL drives

ON TO:

drive size	PSL 204	PSL 210	PSL 320	PSL 325
power	4.5kN	18kN	20kN	25kN
DN	max. differential pressure in flow direction (against flow direction) [bar]			
25	25 (25)			
32	25 (25)			
40	25 (20)			
50	25 (14)	25 (25)		
65	25 (10)	25 (25)		
80	25 (8)	25 (25)		
100	17 (5)	25 (21)		
125	14 (5)	25 (20)	25 (25)	25 (25)
150	-	25 (13)	25 (17)	25 (22)
200	-	-	25 (9)	25 (12)
250	-	-	16 (6)	16 (7)
300	-	-	16 (4)	16 (5)

REGULATION:

drive size	PSL 204-AMS11	PSL 210-AMS11	PSL 214-AMS12	PSL 320-AMS13	PSL 325-AMS13
power	2.3kN	5kN	7kN	10kN	12.5kN
DN	max. differential pressure in flow direction (against flow direction) [bar]				
25	25 (19)	25 (25)			
32	25 (13)	25 (25)			
40	25 (9)	25 (22)	25 (25)		
50	22 (6)	25 (16)	25 (22)		
65	15 (4)	25 (11)	25 (16)		
80	9 (3)	25 (9)	25 (13)		
100	5 (2)	21 (6)	25 (9)		
125	-	17 (5)	25 (8)	25 (12)	25 (15)
150	-	9 (4)	19 (5)	25 (8)	25 (10)
200	-	-	-	24 (4)	25 (6)
250	-	-	-	15 (3)	16 (3)
300	-	-	-	9 (2)	14 (2)

# Segment plate valve with motor drive 5030

## Order number system

Item number:

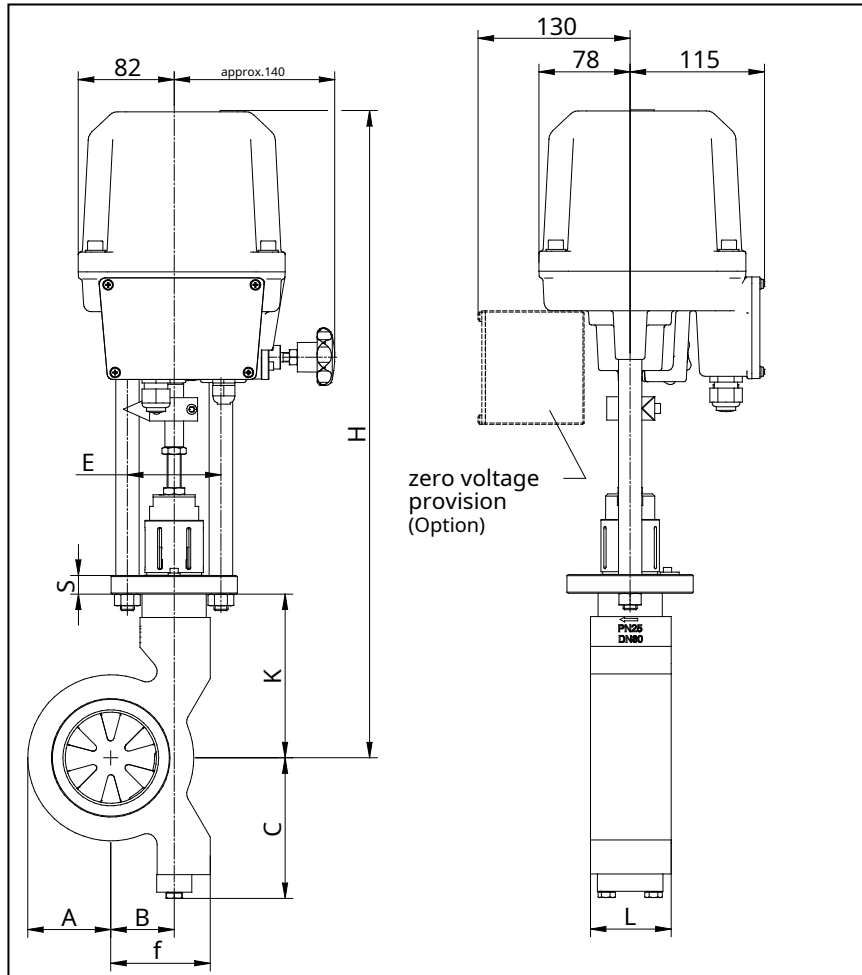
		5030/										Z	...
nominal size													
e.g. DN 25 = 025		xxx											
Article													
Valve		V											
lower part		u											
drive		A											
design													
SPV1 wafer design PN10-PN25, (for flanges according to DIN EN 1092-1, form B)		1											
housing material													
Stainless steel 1.4571 or 1.4112		1											
safety position													
no safety position in the event of a power failure		-											
Fail safe function: safety position closed in the event of a power failure		0											
Fail safe function: Safety position open in the event of a power failure		1											
drive													
without		-											
2 kN linear actuator type 2030 with positioning electronics, IP67, including fault message output		6											
5 kN linear actuator type 2030 with positioning electronics, IP67, including fault message output		7											
Electric linear drive (control), make PS-Automation, type PSL204-AMS11		1											
Electric linear drive (control), make PS-Automation, type PSL210-AMS11		2											
Electric linear drive (control), make PS-Automation, type PSL214-AMS12		3											
Electric linear drive (control), make PS-Automation, type PSL320-AMS13		4											
Electric linear drive (control), make PS-Automation, type PSL325-AMS13		5											
Electric linear drive (open-close operation), make PS-Automation, type PSL204		A											
Electric linear drive (open-close operation), make PS-Automation, type PSL320		C											
Electric linear drive (open-close operation), make PS-Automation, type PSL325		D											
Electric linear drive (open-close operation), make PS-Automation, type PSL210		P											
Special drive (see following items)		S											
special version													
(Standard) unencapsulated version		M											
encapsulated version		K											
motor voltage													
230V, 50/60Hz		-											
3 x 400V, 50/60Hz		1											
spindle seal													
standard (stuffing box)		-											
Internal seals													
Standard (PTFE)		-											
EPDM		1											
Sliding disk, moveable													
Standard, stainless steel 1.4112, treated		-											
Carbon steel 1.7131, treated		1											
Sliding washer, fixed													
Standard, stainless steel 1.4112, treated		-											
Carbon steel 1.7131, treated		1											
Kvs values / characteristic													
Linear 100% (default)		-											
special characteristic		X											

Order example: 5030/050V110P

SP motorized valve, nominal size 50, material: stainless steel, safety position open, actuator make PS-Automation type 210

# Segment plate valve with motor drive 5030

Installation dimensions and KVS values with actuator type 2030

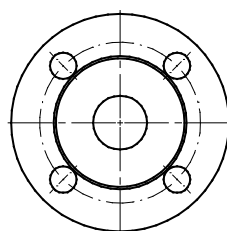


DN	A	B	C	E	f	K	L	S	hub	drive 2kN		drive 5kN	
										H	Weight	H	Weight
25	35	25	70	100	49	99.5	39	16	24	457	12.8	489	14.5
32	41	30	78	100	53.5	112	39	16	28	470	14.3	502	16
40	46	33	82	100	59	103	45	16	32	461	15	493	16.7
50	53.5	41	100	100	68.5	125	56	16	29	524	17.8	556	19.5
65	63.5	50	96	100	76.5	147.5	63	16	23	546	19.6	578	21.3
80	71	54	120	100	85	155	69	16	26	554	22.5	586	24.2
100	83	64	112	100	95	175	79	16	31	574	26.7	606	28.4

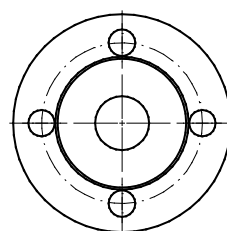
size in mm

A notice:

For DN25 to DN50, the flanges must be rotated by 45° if the valve is to be mounted vertically or horizontally.



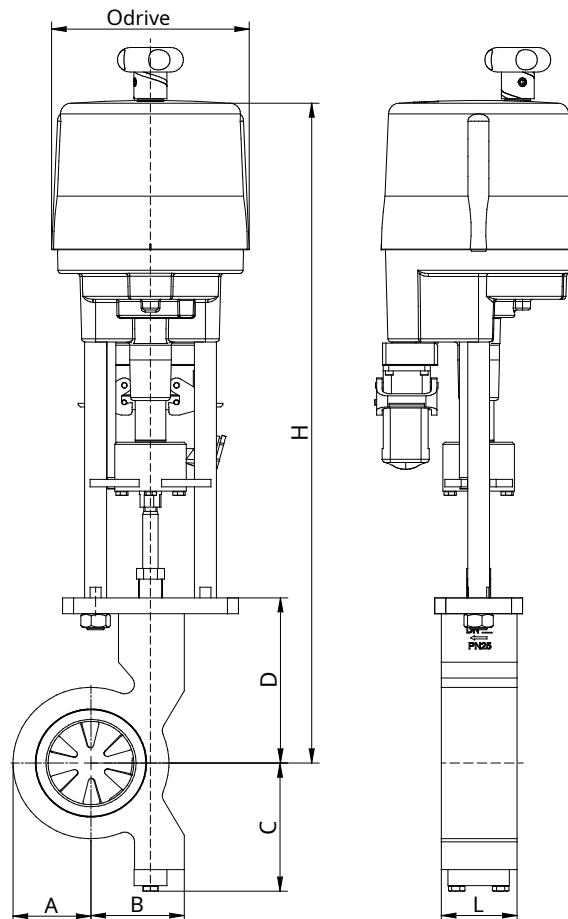
default



rotated 45°

# Segment plate valve with motor drive 5030

## Installation dimensions and KVS values with PSL drive

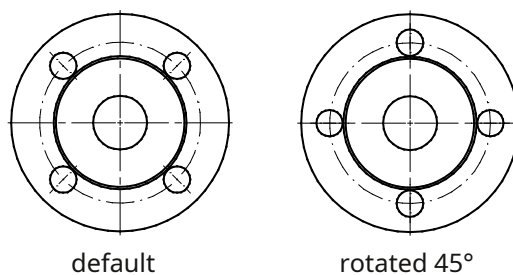


DN	A	B	C	D	L	hub	KVS [m³/h]	drive PSL 204			drive PSL 210			drive PSL 214			drive PSL 320			drive PSL 325		
								Ø D	H	Weight	Ø D	H	Weight	Ø D	H	Weight	Ø D	H	Weight	Ø D	H	Weight
25	35	49	70	99.5	39	24	6.8	177	616.5	11.5	---	---	---	---	---	---	---	---	---	---	---	---
32	41	53.5	78	112	39	28	15	177	629	12	---	---	---	---	---	---	---	---	---	---	---	---
40	46	59	82	103	45	32	24	177	620	12.7	---	---	---	---	---	---	---	---	---	---	---	---
50	53.5	68.5	100	125	56	29	38	177	642	15.5	177	644	17.5	---	---	---	---	---	---	---	---	---
65	63.5	76.5	96	147.5	63	23	52	177	664.5	17.3	177	666.5	19.3	180	730.5	21.3	---	---	---	---	---	---
80	71	85	120	155	69	26	87	177	672	20.2	177	674	22.2	180	738	24.2	---	---	---	---	---	---
100	83	95	112	175	79	31	171	177	692	24.4	177	694	26.4	180	758	28.4	---	---	---	---	---	---
125	97	108	139	185	79	37	275	177	702	30	177	704	32	180	768	34	250	905	45	250	905	45
150	112.5	130	182	220	129	45	410	---	---	---	177	739	56	180	803	58	250	940	69	250	940	69
200	142	162	193	235	159	60	600	---	---	---	---	---	---	---	---	---	250	955	112	250	955	112
250	160	195	217.5	280	153.2	74	1000	---	---	---	---	---	---	---	---	---	250	1000	142	250	1000	142
300	192	217	247.5	305	154	64	1440	---	---	---	---	---	---	---	---	---	250	1025	166	250	1025	166

size in mm

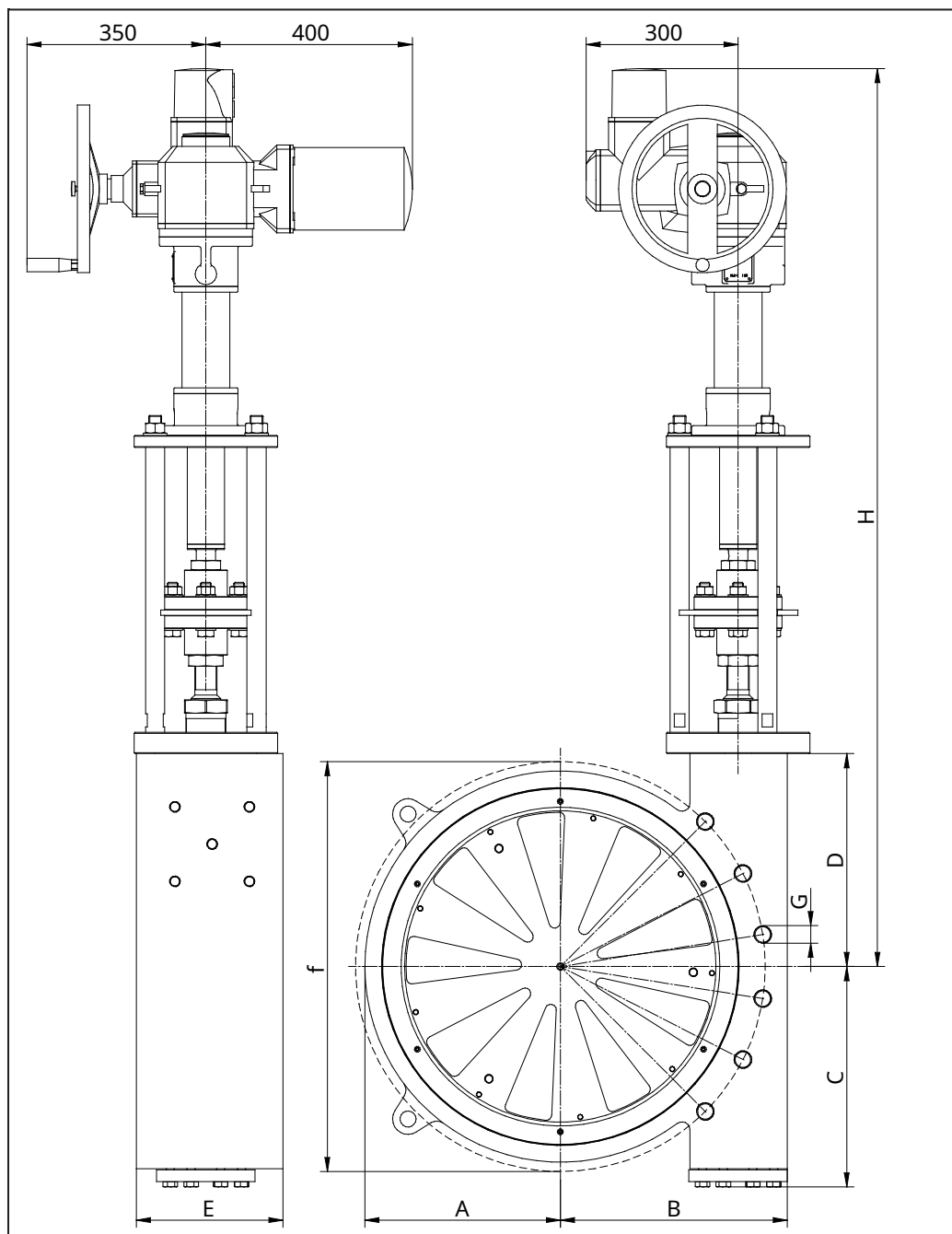
A notice:

For DN25 to DN50, the flanges must be rotated by 45° if the valve is to be mounted vertically or horizontally.



# Segment plate valve with motor drive 5030

## Installation dimensions and KVS values DN 400 to DN 800



DN	A	B	C	D	E	f	G	H	screw attachment number	hub	KV	Weight * lower part	Weight * incl. drive
400	250	310	305	320	210	525	M27	1620	16	77	2190	385	470
500	310	350	335	340	228	650	M30	1640	20	95	3900	530	615
600	370	430	415	400	275.5	770	M33	1700	20	111	5650	861	946
700	405	465	505	420	295	840	M33	1720	24	144	7350	1100	1185
800	460	535	540	450	320	950	M36	1750	24	146	10400	1445	1530

\* All dimensions and weights are approximate and depend on the drive design.

A notice:

Nominal sizes DN 400 to DN 800 may only be used in accordance with category I of the Pressure Equipment Directive 2014/68/EU.